

NEW SUITES

MEDITERRANEAN



JUXTAPOSITION

Modern with a touch of classic, sophistication and refinement, subtle and originality, all modeled by the modernist lines of Barcelona, is what best defines the essence of Le Méridien Barcelona. Le Méridien lifestyle, a balance for urban and global explorers, lovers of good design, entertainment, technology and knowledgeable living are the perfect combination for creative minds looking to find roots of their own story in the world.

CULTURE.

Hand in hand with the above, we add the artistic and gastronomic cultural heritage that we cannot ignore and which deserves a main character role.

DESIGN.

Tradition puts Barcelona in the first level of the international map and Isabel Lopez and her team have made sure that the spirit and charisma of the city is present in every detail of the project.

ARCHITECTURE.

This kind of legacy is given to us by the building housing the hotel plus all the wealth of architectural heritage of the city.

HISTORY.

The historical legacy which the city offers and allows us to understand its character.



Le **MERIDIEN**

LE MERIDIEN BARCELONA
RAMBLAS 111, BARCELONA 8002, SPAIN
T +34 93 318 6200
lemeridien.com/barcelona

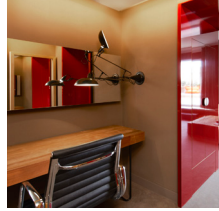
N 41° 23' E 2° 10'

DESIGN & EQUIPMENT

Discover spectacular 50m²/540 sqf terraces with unique views over Barcelona & awakening exterior water elements and seating (fatboy). In the bedroom, find a unique rest experience with Le Méridien bed, a fresh & dynamic working space, large walking closet, 42" flat screen TV, Ipad & Iphone docking station, bathroom tv/mirror, floor heating, tea & coffee facilities, connecting rooms, turn-down services, night infusion, cinq mondes amenities, selected magazines, maxi-refreshment center, rain shower, 24hr room service. All features consistent with the brand spirit, the cities style and respectful with the environment.



**MOSAICO
HIDRAULICO**
A heritage detail material



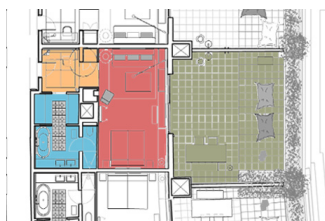
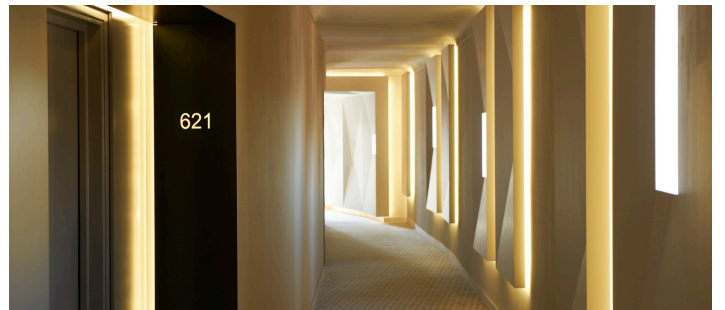
**RECYCLE PEAK
WOOD DESK**
A modern and juxtaposition shape



**CADAQUES SOFA
& IBIZA ARMCHAIR**
An historical piece of the international design panorama



**FATBOY
RAIN SHOWER**
A new concept to explore oneself



FUNCTION	SQ. M.
ENTRANCE	19
BATHROOM + CLOSET	11.6
BEDROOM	13.3
TERRACE	46.7
TOTAL	88.9



EXPLORATION AWAITS AT WALKING DISTANCE

- 01 Gothic Quarter / 2 min.
- 02 Santa Maria del Mar cathedral / 6 min.
- 03 Picasso Museum / 6 min.
- 04 Palau de la Musica / 5 min.
- 05 Paseo de Gracia shopping area / 5 min.
- 06 Sagrada Familia / 40 min.
- 07 MACBA / 5 min.
- 08 Barcelona FC Stadium / 10 min. / by car

ACCESS

- Barcelona Airport / 30 min.
- Sants train station / 10 min.
- Plaza Catalunya / walking distance / 3 min.