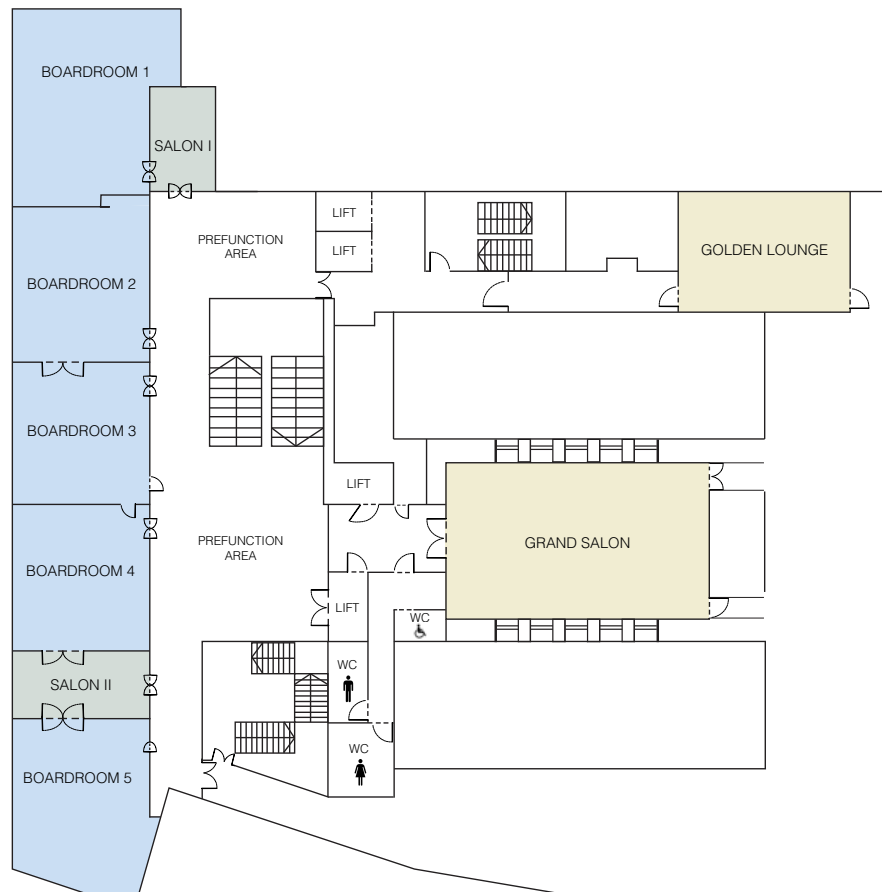




PARK HYATT VIENNA

Am Hof 2
 1010 Vienna,
 Austria
 TELEPHONE +43 1 22740 1234
 FACSIMILE +43 1 22740 1235
 EMAIL vienna.park@hyatt.com
vienna.park.hyatt.com



CONFERENCES & BANQUETS

- 800 square metres of premium meeting space on Bel Etage
- Natural daylight through generous windows, which can be opened and darkened
- All conference rooms on the same floor
- Air-conditioning

MEETING TECHNOLOGY

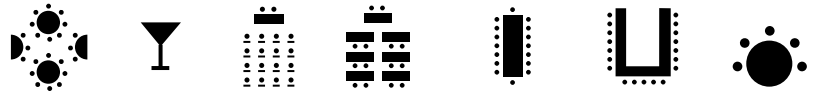
- Wireless Internet connectivity
- Permanently installed screens (70" to 80") / audio
- Multilingual staff
- State-of-the-art boardrooms
- Touch panel control



PARK HYATT VIENNA

Am Hof 2
 1010 Vienna,
 Austria
 TELEPHONE +43 1 22740 1234
 FACSIMILE +43 1 22740 1235
 EMAIL vienna.park@hyatt.com
vienna.park.hyatt.com

ROOM DIMENSIONS & CAPACITIES



Room Name	Room Dimensions Length x Width x Height	Room Size Sq. Ft. / Sq. M.	Banquet	Cocktail	Theatre	Classroom	Boardroom	U-Shape	Cabaret
GRAND SALON	65.6' x 32.8' x 22.96' 20m x 10m x 7m	2,174 202	112	200	168	48	42	36	60
BOARDROOM 1*	32.8' x 48.04' x 14.6' 10m x 5.5m x 4.45m	624 58	—	—	—	—	18	16	16
BOARDROOM 2	27.88' x 21.32' x 14.6' 8.5m x 6.5m x 4.45m	624 58	40	30	30	16	16	14	24
BOARDROOM 3	26.89' x 21.97' x 14.6' 8.2m x 6.7m x 4.45m	624 58	40	30	30	16	16	14	24
BOARDROOM 4	26.89' x 21.97' x 14.6' 8.2m x 6.7m x 4.45m	624 58	40	30	30	16	16	14	24
BOARDROOM 5*	26.89' x 21.97' x 14.6' 8.2m x 6.7m x 4.45m	624 58	—	10	—	—	10	8	8
GOLDEN LOUNGE	34.44' x 24.13' x 14.6' 10.5m x 6.5m x 4.45m	732 68	50	40	40	20	20	20	30
SALON I	20' x 24.13' x 14.6' 6.1m x 3.7m x 4.45m	236 22	—	—	—	—	—	—	—
SALON II	20' x 24.13' x 14.6' 6.1m x 3.7m x 4.45m	301 28	8	10	—	—	—	—	8

*Permanent table in the room

All rooms with natural light